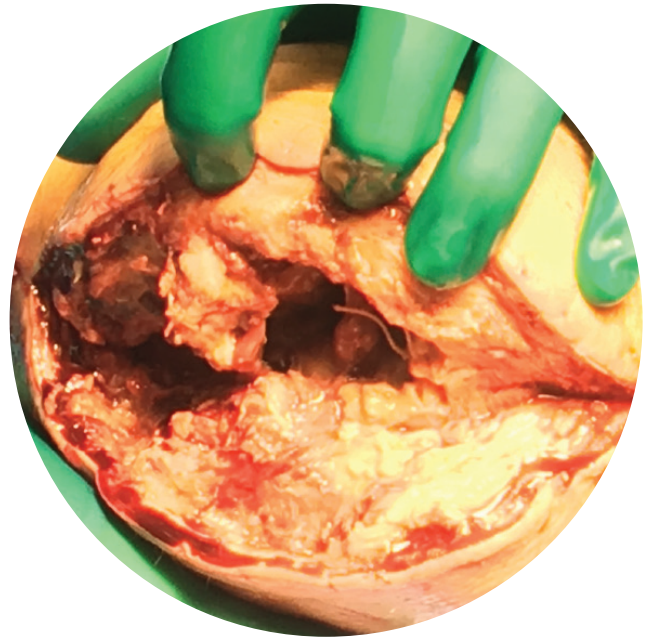




CARING FOR CHALLENGING CLOSURES WHEN PATIENTS NEED IT MOST

AMNIOFIX



- Dehydrated human amnion/chorion membrane allograft
- A semi-permeable barrier that supports the healing cascade
- Supports challenging closures in comorbid patients



Clinical Use Examples

- Comorbid patients with complex defects or delayed healing
- Debridements, amputations, dehiscence, flaps, decubitus ulcers, trauma, pilonidal cysts, port sites, and burns

Product Advantages

- SMR²T_{TM} Technology and patented Purion[®] processing
- Terminally sterilized for additional level of safety
- Easy to apply
- Ambient-condition storage⁴
- 5-year shelf life
- Compatible with negative pressure wound therapy (NPWT) and hyperbaric oxygen therapy (HBO)



Patents and patents pending see: www.mimedx.com/patents. AmnioFix, Purion, SMR²T, and MiMedx are trademarks of MiMedx Group, Inc. ©2020 MiMedx Group, Inc. All Rights Reserved. www.mimedx.com AM254.001

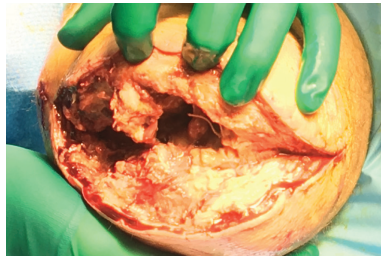
AmnioFix[®] is a dehydrated human amnion/chorion membrane allograft. AmnioFix sheets provide a semi-permeable protective barrier that supports the healing cascade and protects the wound bed to aid in the development of granulation tissue in acute and chronic closures. AmnioFix provides a biocompatible human extracellular matrix and retains 300+ regulatory proteins.¹⁻³

Case Example: BKA to AKA after Recurrent Dehiscence⁵

Comorbidities: COPD, obesity, PVD, peripheral neuropathy, HTN, and smoking (2 packs per day).

Background: Comorbid elderly patient with BKA due to non-healing wounds and osteomyelitis had surgical site dehiscence twice and remained open for 6 months. BKA was converted to AKA, patient continued smoking, and the surgical site dehisced. Patient underwent two more surgical debridements with secondary wound closures. AmnioFix was applied during the third surgical debridement and wound closed.

Goal: Secondary intention wound closure



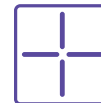
Extensive debridement of recurrent dehiscence of AKA prior to placement of AmnioFix



Week 4: Complete wound closure s/p debridement and one AmnioFix application

AmnioFix Configurations

Item #	Size and Description
APS-5160	16 mm disc
APS-5230	2 cm x 3 cm sheet
APS-5212	2 cm x 12 cm sheet
AAS-5330	3 cm x 3 cm sheet
APS-5440	4 cm x 4 cm sheet
AAS-5460	4 cm x 6 cm sheet
AU-5760	7 cm x 6 cm sheet
APS-5616	6 cm x 16 cm sheet
APS-5920	9 cm x 20 cm sheet



AKA = above knee amputation, BKA = below knee amputation, COPD = chronic obstructive pulmonary disease, DM = diabetes mellitus, HTN = hypertension, PVD = peripheral vascular disease

REFERENCES: 1. Koob, et al. J Biomed Mater Res B Appl Biomater. 2014 Aug;102(6):1353-62. 2. Lei, et al. Adv Wound Care. 2017 Feb 1;6(2):43-53. 3. MM-RD-00086, Proteome Characterization of Purion Processed Dehydrated Human Amnion Chorion Membrane (dHACM) and Purion Plus Processed Dehydrated Human Umbilical Cord (dHUC) Allografts. 4. See MiMedx Product Instructions for Use for further details. 5. AM218.001 MiMedx Case Example, AmnioFix for Lower Extremity Amputation.

866.477.4219 • customerservice@mimedx.com